



## New Hope Clinic Inc.

201 W. Boiling Spring Rd, Southport, NC 28461

Phone: (910) 845-5333 Fax: (910) 845-5366

Email: [clinic@newhopeclinicfree.org](mailto:clinic@newhopeclinicfree.org) [www.newhopeclinicfree.org](http://www.newhopeclinicfree.org)

A 501(c)3 nonprofit organization: EIN 31-1614379



# 2014 Annual Report

New Hope Clinic continues to be committed to serving the healthcare needs of the underserved in Brunswick County. We deliver a full range of healthcare services, including primary and specialty medical care, dental care, patient education, and prescription medications, at no cost to our patients. With the tireless commitment of our organizational partners, volunteer base, and staff, New Hope Clinic is able to provide an innovative, cost-effective and comprehensive solution for many uninsured Brunswick County residents.

The Affordable Care Act is expected to extend coverage to many Americans over the next decade, but there will continue to be uninsured individuals. There are gaps in services not covered and, unfortunately, we live in an area with a shortage of providers. The NHC is still in great demand as the transition in health care has already proven to be difficult on many fronts.

The medically underserved in our community struggle with daily choices such as putting food on the table for their family, paying for housing, utilities, and even rationing prescriptions. At New Hope Clinic, we are thankful for our volunteers, staff, and donors who help us provide accessible healthcare to our patients. With your help, our clinic will continue to help build a healthy Brunswick County, one patient at a time!

In appreciation for all you do for our community through your support of New Hope Clinic, we thank you for your continued support. We hope you find this annual report interesting.

Sincerely,

Gretchen Bodinsky  
President, Board of Directors

Sheila Roberts  
Executive Director

### Mission:

To provide basic medical and dental care, diagnostic services and prescription drugs to low income, uninsured residents of Brunswick County and to enhance the quality of life, while preserving the privacy and dignity of every patient.

### Vision:

To strive to serve the healthcare needs of Brunswick County residents and continue to increase our healthcare services.

### Values:

In everything we do, we will demonstrate our belief in the worth and dignity of all individuals through:

- Compassion
- Teamwork
- Confidentiality
- Integrity
- Community Partnership
- Quality Care
- Financial Responsibility

## Services Provided:

- **Eligibility Interviews:** Call for additional hours  
Mondays 8am - 4pm  
Thursdays 8am - 4pm
- **Medical diagnosis and treatment:** By appointment  
Mon - Fri 9am - 4pm; other hours as available
- **Pharmacy:**  
Tuesdays:  
Call before 4pm; pickup 2pm - 4:30pm  
Thursdays:  
Call before 2pm; pickup 2pm - 8pm
- **By Appointment:**  
Chiropractor  
Dental  
Endocrinology  
EKG  
Urology  
Medical Eye Exams  
Weight Management Class  
Pharmacy Assistance Program

## Open to all Brunswick County Residents

- **Diabetes Education Class:**  
1st Tuesday 7pm - 8pm  
Brunswick Senior Resources  
3620 Express Drive, Shallotte, NC  
3rd Thursday 5:15pm - 6:15pm  
New Hope Clinic
- **RHA Mental Health Crisis Clinic:**  
Monday - Friday 8am - 5pm; Walk-in  
Call 910-632-2191 for more info
- **ResCare Workforce Services:**  
Tuesdays at New Hope Clinic, by appointment  
Call 910-632-2191 for more info
- **Duke Partners in Caring:**  
HIV, Glucose & Blood Pressure testing & counseling  
3rd Thursday 1pm - 5 pm; Walk-in
- **Southport Lions Club:**  
Vision screenings  
4th Wednesday 9:30am - 11:30am; Walk-in

Dosher Memorial Hospital,  
Novant Health Brunswick Medical Center,  
New Hanover Regional Medical Center,  
Delaney Radiology,  
& many specialty medical practices  
have provided laboratory, diagnostic and  
treatment services for NHC patients.

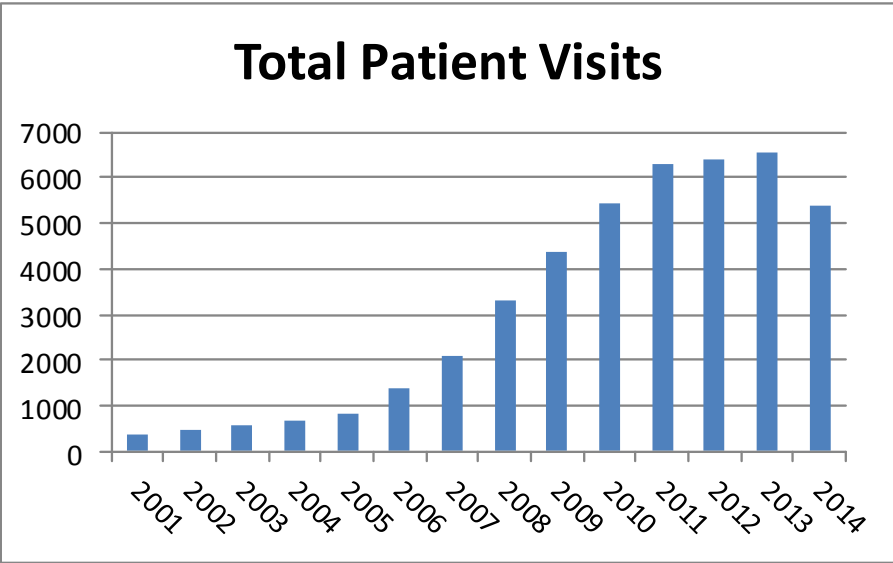
The Value of Services  
provided at  
New Hope Clinic  
in 2014 was  
**\$2,265,445**

New Hope Clinic  
patients received  
medications valued at  
\$781,739  
from  
Patient Assistance Programs

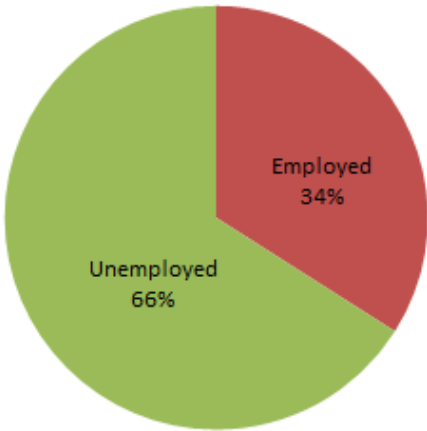
Although NHC has a  
small staff equivalent to 4.0 Full-  
Time Employees, we continue to be  
a volunteer-driven organization.  
162 talented individuals donated  
10,013 hours of service in 2014.

<b>Volunteer Position</b>	<b># of People</b>	<b>Hours</b>
Medical Doctors	10	275
Dentists	11	137
Chiropractors	3	61
Optometrists	3	58
Registered Nurses	24	1,889
LPNs	4	62
EMTs/CMAs	6	113
Dental Assistants	13	325
Pharmacists	11	609
Pharmacy Techs	4	210
Interpreters	2	13
Administrative Assts	65	4,496
Eligibility	14	705
IT/Computers	3	503
Other	48	557
<b>TOTAL VOLUNTEER HOURS</b>		<b>10,013</b>

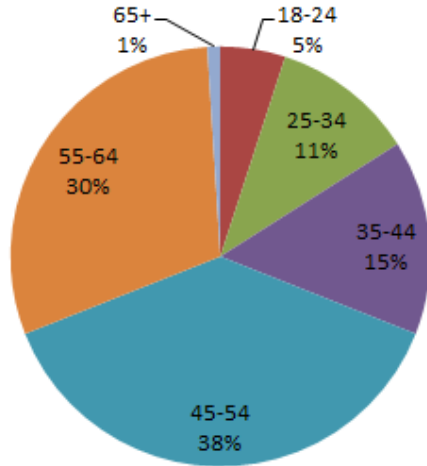
**895  
PATIENTS  
SERVED  
IN 2014**



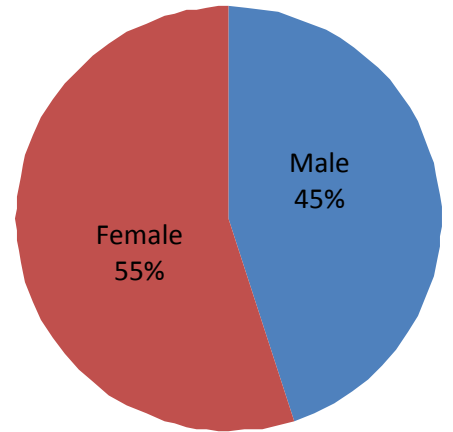
**Patient Employment Status**



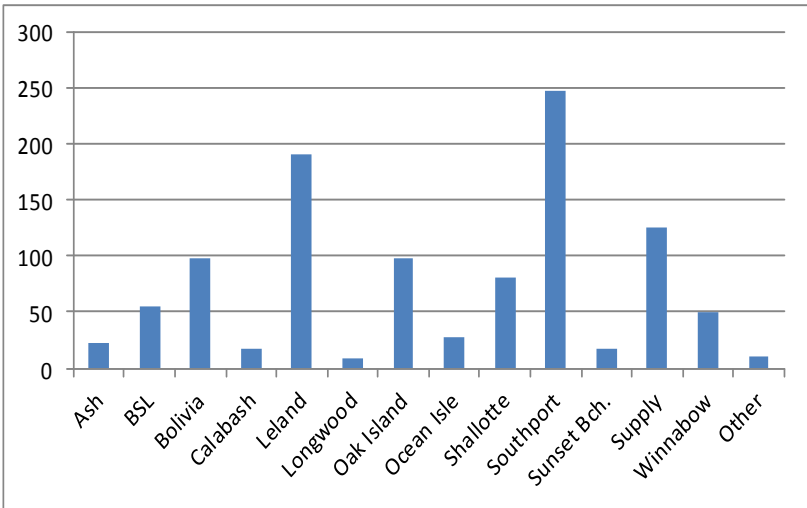
**Patient Age**



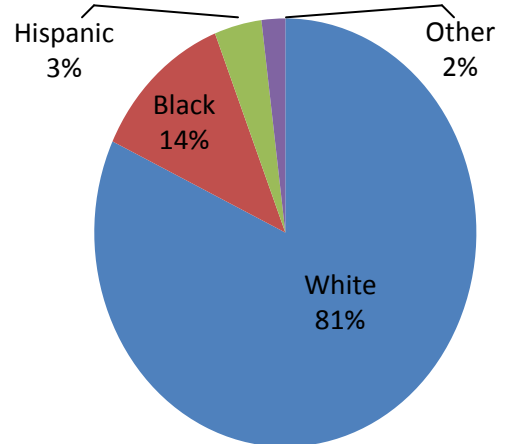
**Patient Gender**



**Patient Residence**

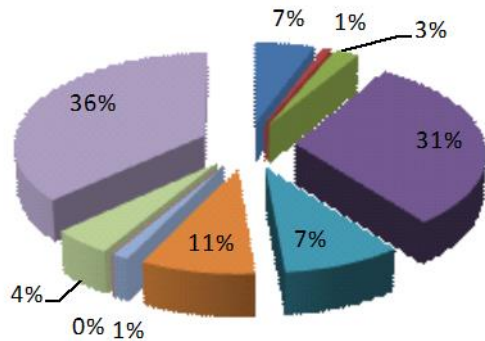


**Patient Race**



# 2014 Report on Revenue and Expenses

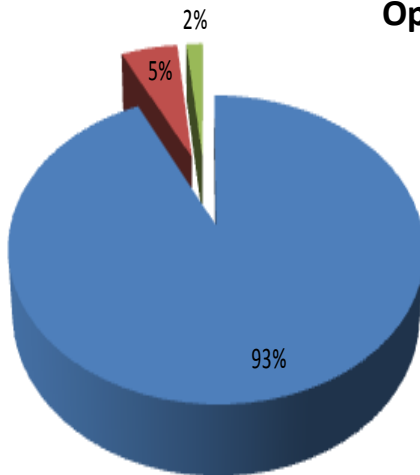
## Operating Revenue Sources



Individual Contributions	\$43,434	6.91%
Corporate Contributions	\$3,368	0.54%
Churches & Civic Org Contributions	\$19,965	3.18%
Grants - Private Foundations	\$195,271	31.08%
Grants - County	\$43,905	6.99%
Grants - Other	\$68,201	10.86%
Program Service Revenue	\$4,605	0.73%
Investment Income	\$152	0.02%
Fundraisers	\$22,284	3.55%
Noncash contributions*	\$227,069	36.14%

TOTAL \$628,254

## Operating Expenses



Program Services*	\$501,316	94.05%
Management & General	\$25,139	4.72%
Fundraising	\$6,579	1.23%

TOTAL\*\* \$533,034

\*Includes Donated Professional Services valued at \$187,792

\*\*Not included in expenses: Building Principal payments

### Board of Directors

Gretchen Bodinsky, RN - President  
 Dennis O'Connor - Vice President  
 Amie Sloane - Secretary  
 Bruce Stenquist - Financial Officer  
 June Baker  
 Christy Bell  
 David Berne  
 Harry Einbinder  
 Karen LeMay  
 Ray Vipperman  
 Toni Melvin Whitaker

### Medical Director

Karen Wood, MD

### Dental Director

Jennifer S. Williams, DDS

### Pharmacy Director

David E. Anderson, RPH

### Staff

Sheila Roberts - Executive Director  
 Shirley Adams - Office Assisant  
 Mable Danford - Receptionist  
 Karol Downing - Physician Assistant - Certified  
 Rebecca Fairchild - Family Nurse Practitioner - Certified  
 Angela Lambert - Registered Nurse  
 Aimee Youngblood - Patient Assistance Program Coordinator